

## KRAIBURG rubber coverings on paved floors



### prerequisites:

The walking area mats were installed according to the KRAIBURG installation instructions.

### fundamentally:

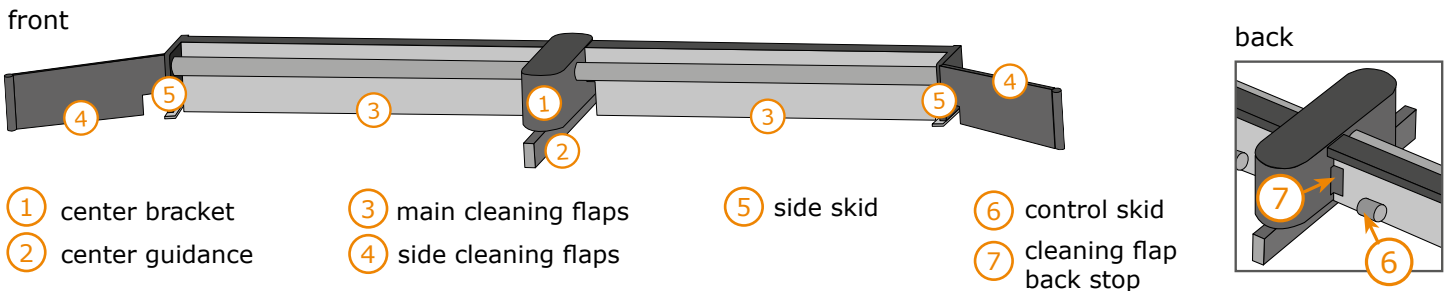
use scrapers especially developed for rubber floors

### structural alterations:

adapt scraper facilities in collaboration with the scraper manufacturer, according to the KRAIBURG guidelines for manure scrapers

### attention:

only materials with a rubber/plastic or rather metal base can come into contact with the rubber mats, no abrasive materials, e.g. concrete



- ① center bracket
- ② center guidance

- ③ main cleaning flaps
- ④ side cleaning flaps

- ⑤ side skid

- ⑥ control skid
- ⑦ cleaning flap back stop

### General prerequisites:

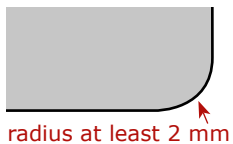
#### ① Unsharpen the edges of the scraper parts

- all edges coming into contact with the mats must be made blunt (chamfered or rounded)!
- check scraper facility for sharp edges caused by wear and tear!

**! important:**  
regular maintenance!  
check the scraper at least once a year!

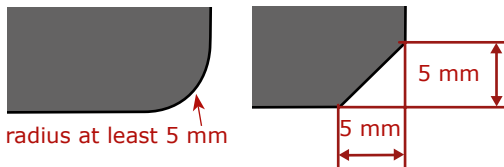
#### cleaning flaps ③, ④:

at least with R2



#### center bracket ① and side skids ⑤:

at least with R5 or chamfer 5 x 45°



#### ② Bearing pressure should be as low as possible

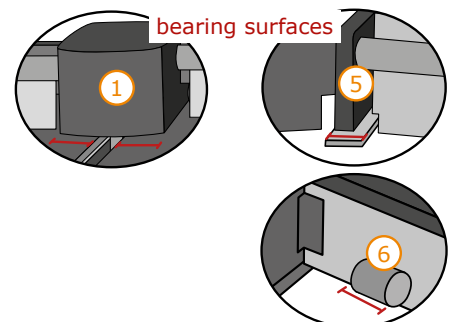
- Bearing surface of scraper parts:

	standard scrapers with center bracket up to about 250 kg total weight:	heavy scrapers with center bracket up to about 500 kg total weight:
center bracket ① and side skids ⑤	minimum 4 cm wide	minimum 8 cm wide
control skids of cleaning flaps ⑥	minimum 6 cm wide	minimum 8 cm wide

#### Extremely heavy scrapers and scrapers with no center bracket:

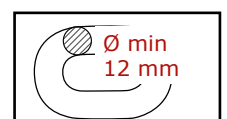
enlarge bearing surface respectively (calculate the surface pressure of the scraper parts)

- maximum allowable surface pressure of scraper parts:
  - on the center bracket ①: up to 0.3 kg/cm<sup>2</sup>
  - on the side skids ⑤: up to 0.5 kg/cm<sup>2</sup>



#### ③ Scraper without center guidance:

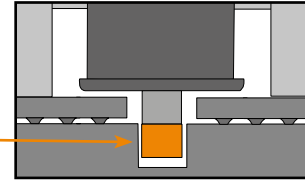
- set the deflection pulley higher, according to mat thickness
- steel ropes cannot lie directly on the rubber mat
  - > protect mat from abrasion from the rope!
- no abrasion protection needed for the mat, if:
  - a **rod steel link chain** with at least a 12 mm diameter is used
  - a plastic rope or plastic covered rope is used



## Scraper adaptation

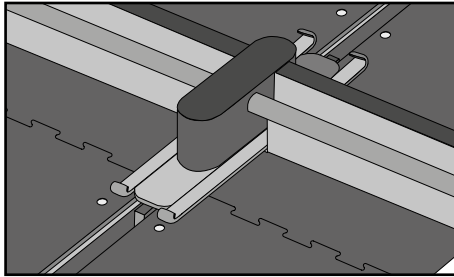
### ► Center bracket ①

**!** **attention:** Make sure that after installation the guide is securely in the designated groove. Heighten the guide by the mat's thickness!

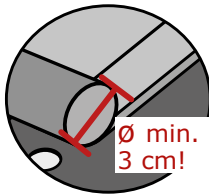


### Options:

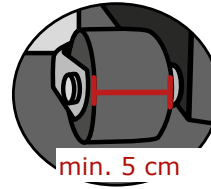
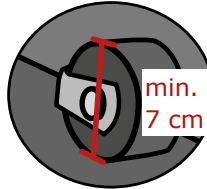
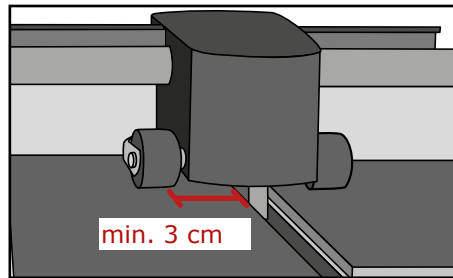
#### ① skid form bearing surface (front and back)



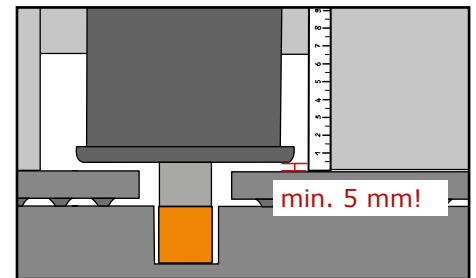
a further option:  
attach rod iron



#### ② rollers



#### ③ it might be necessary to raise the center bracket

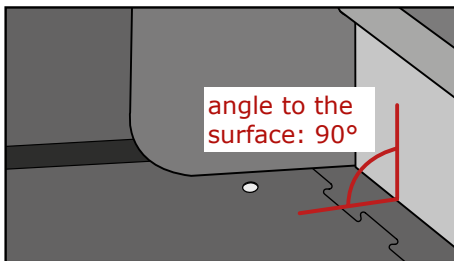


minimum distance from mat: 5 mm!

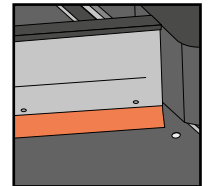
**!** **watch for wear and tear!**

### ► Cleaning flaps ③

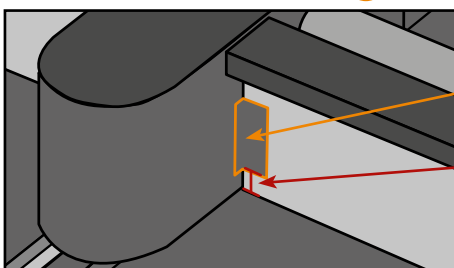
#### Prerequisite:



**i** An elastic **rubber or plastic lip** on the cleaning flaps is not required, but can contribute to better cleaning results (especially advantageous when there are hollows, i.e. uneven floors).



#### cleaning flap back stop ⑦

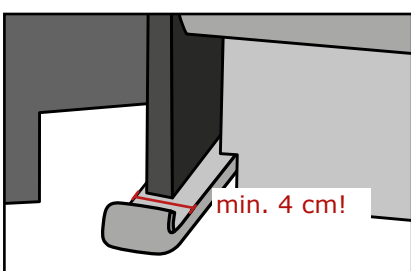


cleaning flap back stop

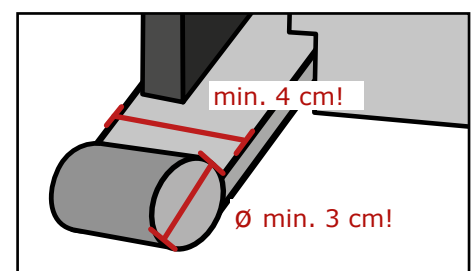
no contact to the surface!  
distance important!

### ► Side skids ⑤

bend in skid form in the front and back



a further option:  
attach a rod iron



# Scraper adaption - examples -

## ► Unsharpen the edges of the scraper parts



bearing surface of side skid is rounded off



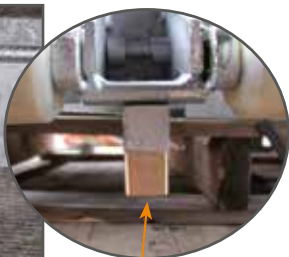
side cleaning flap  
attention: sharp edges! (-> round off!)

## ► Center bracket



center bracket rests on wide plastic rollers

cleaning flap back stop



guide underneath the center bracket set higher according to mat thickness



wide bearing for the center bracket, bent up in skid form



side view



wide bearing for center bracket, welded on rod iron

## ► Side skids



side skids with rod iron and wide bearing



wide and bent up side skids, screwed on



wide and bent up side skids

## ► Main cleaning flaps



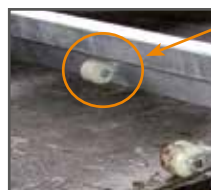
chain links welded on



rod iron disks on a rail



guiding skid on main cleaning flap



guide skid on main cleaning flap with roller



cleaning flap back stop: no contact to the surface



rubber lip: good cleaning results, and is safe to use on rubber mats

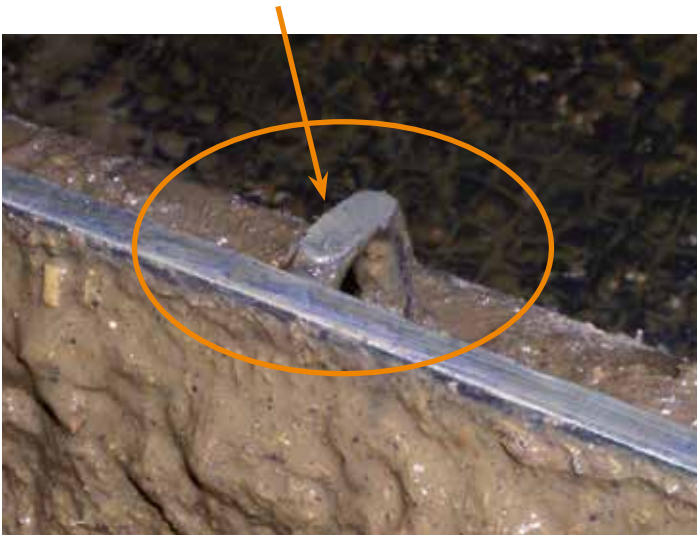
# Important: regular maintenance

Even on rubber covers scraper parts wear out, i. e. edges become sharp from grinding.

**!** Check the scraper **at least once a year** and grind off the sharp edges!

**Example:** scraper wear on steel parts

use on rubber after approx. one year:  
significant abrasion recognizable



**!** **Scraper adaptation:**

- 1. turn scraper over and check it**
- 2. unsharpen sharp edges with an angle grinder**